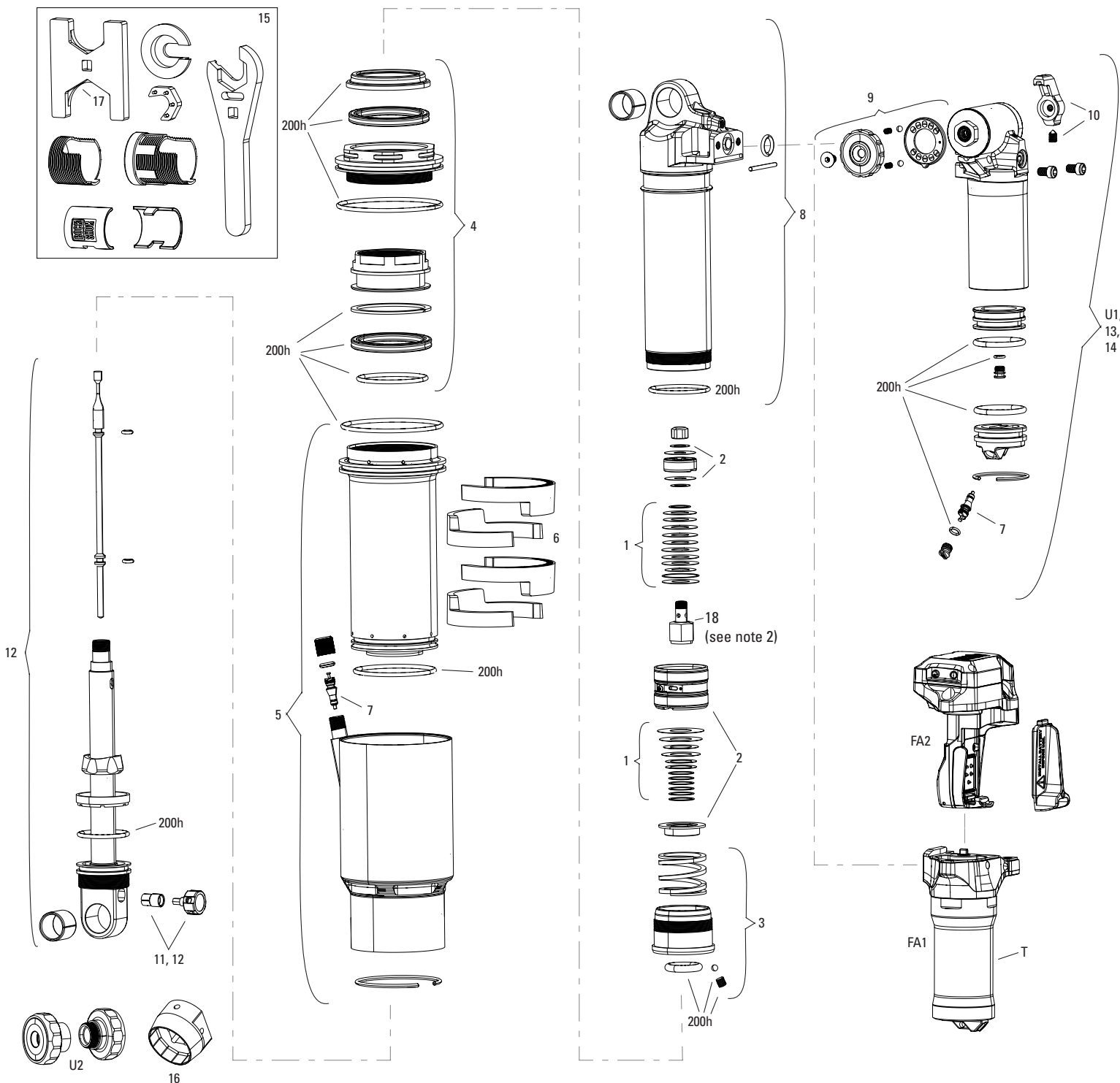


VIVID AIR C1 (2024+)

RS-VIVD-BSE-C1, RS-VIVD-SEL-C1, RS-VIVD-SELP-C1, RS-VIVD-ULT-C1, RS-VIVD-UDH-C1, RS-VIVD-UFA-C1



Note:

1. See the RockShox Rear Shock Piston Tuning Guide for detailed information regarding the shim stack order for the rebound and compression dampers

2. Travel change only recommended within root size ranges: 37.5-45, 47.5-55, 57.5-65, and 67.5-75. Travel change will result in incorrect sag gradients.

Damper body, damper shaft, and air can are also REQUIRED if changing outside root size.

VIVID AIR C1 (2024+)

RS-VIVD-BSE-C1, RS-VIVD-SEL-C1, RS-VIVD-SELP-C1, RS-VIVD-ULT-C1, RS-VIVD-UDH-C1, RS-VIVD-UFA-C1



UPGRADE	
U1	00.4318.084.000 RESERVOIR UPGRADE KIT - RC2T ULTIMATE RESERVOIR (INCLUDES COMPLETE ULTIMATE RESERVOIR, INTERNALS, CONTROLS) - VIVID AIR/COIL C1+, SUPER DELUXE AIR C1+/COIL B1
U2	00.4318.088.000 Rear Shock Bearing Adapter Upgrade Kit - 8x30 26mm OD (converts standard DU Bushings to Bearing on 8x30 frames)- Vivid Coil C1+ (2025+), Vivid C1 (2024+), Super Deluxe Coil B1 (2023-2024), Deluxe Coil B1+ (2023+)
SERVICE KITS	
200H	00.4318.037.018 100h AND 200 HOUR/1 YEAR SERVICE KIT (INCLUDES AIR CAN, SEALHEAD, IFP, PISTON SEALS, GREASE/OIL) - VIVID (2024+) GENERATION-C, V2
TUNES	
1	11.4118.096.021 REAR SHOCK TUNE ASSEMBLY - COMPRESSION/REBOUND(INCLUDES SHIMS FOR COMPRESSION AND REBOUND TUNE CONFIGURATIONS) - VIVID C1+ (2024+)/VIVID COIL C1+ (2025+)
DAMPER PISTON	
2	11.4118.085.008 REAR SHOCK DAMPER PISTON ASSEMBLY - (TUNE SHIMS SOLD SEPARATELY) - VIVID C1+ (2024+)
SEALHEADS	
3	11.4118.056.021 REAR SHOCK DAMPER SEALHEAD ASSEMBLY - VIVID C1+ (2024+) V2
4	11.4118.056.020 REAR SHOCK AIR SEALHEAD ASSEMBLY - POSITIVE AND NEGATIVE (INCLUDES SEALS) -VIVID C1+ (2024+) V2
AIR CAN	
5	11.4118.059.022 REAR SHOCK AIR CAN ASSEMBLY - BLACK 165/190X37.5-45mm (INCLUDES DECALS) - VIVID C1+ (2024+)
5	11.4118.059.023 REAR SHOCK AIR CAN ASSEMBLY - BLACK 185/210X47.5-55mm (INCLUDES DECALS) - VIVID C1+ (2024+)
5	11.4118.059.024 REAR SHOCK AIR CAN ASSEMBLY - BLACK 205/230X57.5-65mm (INCLUDES DECALS) - VIVID C1+ (2024+)
5	11.4118.059.025 REAR SHOCK AIR CAN ASSEMBLY - BLACK 225/250X67.5-75mm (INCLUDES DECALS) - VIVID C1+ (2024+)
VOLUME REDUCERS	
6	11.4118.051.011 REAR SHOCK VOLUME REDUCER KIT - (INCLUDES 4 TOKENS) - VIVID C1+ (2024+)
EYELET/DAMPER BODY	
7	11.4308.327.002 AIR VALVE KIT - SCHRADER CORE (QTY 2) - FORKS/SHOCKS/REVERB
8	11.4118.102.033 REAR SHOCK EYELET ASSEMBLY - (EYELET, DAMPER BODY & O-RINGS) (RESERVOIR & CONTROLS NOT INCLUDED) STANDARD 37.5 - VIVID C1+ (2024+)
8	11.4118.102.034 REAR SHOCK EYELET ASSEMBLY - (EYELET, DAMPER BODY & O-RINGS) (RESERVOIR & CONTROLS NOT INCLUDED) STANDARD 40 - VIVID C1+ (2024+)
8	11.4118.102.035 REAR SHOCK EYELET ASSEMBLY - (EYELET, DAMPER BODY & O-RINGS) (RESERVOIR & CONTROLS NOT INCLUDED) STANDARD 42.5 - VIVID C1+ (2024+)
8	11.4118.102.036 REAR SHOCK EYELET ASSEMBLY - (EYELET, DAMPER BODY & O-RINGS) (RESERVOIR & CONTROLS NOT INCLUDED) STANDARD 45 - VIVID C1+ (2024+)
8	11.4118.102.037 REAR SHOCK EYELET ASSEMBLY - (EYELET, DAMPER BODY & O-RINGS) (RESERVOIR & CONTROLS NOT INCLUDED) STANDARD 47.5 - VIVID C1+ (2024+)
8	11.4118.102.038 REAR SHOCK EYELET ASSEMBLY - (EYELET, DAMPER BODY & O-RINGS) (RESERVOIR & CONTROLS NOT INCLUDED) STANDARD 50 - VIVID C1+ (2024+)
8	11.4118.102.039 REAR SHOCK EYELET ASSEMBLY - (EYELET, DAMPER BODY & O-RINGS) (RESERVOIR & CONTROLS NOT INCLUDED) STANDARD 52.5 - VIVID C1+ (2024+)
8	11.4118.102.040 REAR SHOCK EYELET ASSEMBLY - (EYELET, DAMPER BODY & O-RINGS) (RESERVOIR & CONTROLS NOT INCLUDED) STANDARD 55 - VIVID C1+ (2024+)
8	11.4118.102.041 REAR SHOCK EYELET ASSEMBLY - (EYELET, DAMPER BODY & O-RINGS) (RESERVOIR & CONTROLS NOT INCLUDED) STANDARD 57.5 - VIVID C1+ (2024+)
8	11.4118.102.042 REAR SHOCK EYELET ASSEMBLY - (EYELET, DAMPER BODY & O-RINGS) (RESERVOIR & CONTROLS NOT INCLUDED) STANDARD 60 - VIVID C1+ (2024+)
8	11.4118.102.043 REAR SHOCK EYELET ASSEMBLY - (EYELET, DAMPER BODY & O-RINGS) (RESERVOIR & CONTROLS NOT INCLUDED) STANDARD 62.5 - VIVID C1+ (2024+)
8	11.4118.102.044 REAR SHOCK EYELET ASSEMBLY - (EYELET, DAMPER BODY & O-RINGS) (RESERVOIR & CONTROLS NOT INCLUDED) STANDARD 65 - VIVID C1+ (2024+)
8	11.4118.102.045 REAR SHOCK EYELET ASSEMBLY - (EYELET, DAMPER BODY & O-RINGS) (RESERVOIR & CONTROLS NOT INCLUDED) STANDARD 67.5 - VIVID C1+ (2024+)
8	11.4118.102.046 REAR SHOCK EYELET ASSEMBLY - (EYELET, DAMPER BODY & O-RINGS) (RESERVOIR & CONTROLS NOT INCLUDED) STANDARD 70 - VIVID C1+ (2024+)
8	11.4118.102.047 REAR SHOCK EYELET ASSEMBLY - (EYELET, DAMPER BODY & O-RINGS) (RESERVOIR & CONTROLS NOT INCLUDED) STANDARD 72.5 - VIVID C1+ (2024+)
8	11.4118.102.048 REAR SHOCK EYELET ASSEMBLY - (EYELET, DAMPER BODY & O-RINGS) (RESERVOIR & CONTROLS NOT INCLUDED) STANDARD 75 - VIVID C1+ (2024+)
ns	11.4118.102.049 REAR SHOCK EYELET ASSEMBLY - (EYELET, DAMPER BODY & O-RINGS) (RESERVOIR & CONTROLS NOT INCLUDED) TRUNNION 37.5 - VIVID C1+ (2024+)
ns	11.4118.102.050 REAR SHOCK EYELET ASSEMBLY - (EYELET, DAMPER BODY & O-RINGS) (RESERVOIR & CONTROLS NOT INCLUDED) TRUNNION 40 - VIVID C1+ (2024+)
ns	11.4118.102.051 REAR SHOCK EYELET ASSEMBLY - (EYELET, DAMPER BODY & O-RINGS) (RESERVOIR & CONTROLS NOT INCLUDED) TRUNNION 42.5 - VIVID C1+ (2024+)
ns	11.4118.102.052 REAR SHOCK EYELET ASSEMBLY - (EYELET, DAMPER BODY & O-RINGS) (RESERVOIR & CONTROLS NOT INCLUDED) TRUNNION 45 - VIVID C1+ (2024+)
ns	11.4118.102.053 REAR SHOCK EYELET ASSEMBLY - (EYELET, DAMPER BODY & O-RINGS) (RESERVOIR & CONTROLS NOT INCLUDED) TRUNNION 47.5 - VIVID C1+ (2024+)
ns	11.4118.102.054 REAR SHOCK EYELET ASSEMBLY - (EYELET, DAMPER BODY & O-RINGS) (RESERVOIR & CONTROLS NOT INCLUDED) TRUNNION 50 - VIVID C1+ (2024+)
ns	11.4118.102.055 REAR SHOCK EYELET ASSEMBLY - (EYELET, DAMPER BODY & O-RINGS) (RESERVOIR & CONTROLS NOT INCLUDED) TRUNNION 52.5 - VIVID C1+ (2024+)
ns	11.4118.102.056 REAR SHOCK EYELET ASSEMBLY - (EYELET, DAMPER BODY & O-RINGS) (RESERVOIR & CONTROLS NOT INCLUDED) TRUNNION 55 - VIVID C1+ (2024+)
ns	11.4118.102.057 REAR SHOCK EYELET ASSEMBLY - (EYELET, DAMPER BODY & O-RINGS) (RESERVOIR & CONTROLS NOT INCLUDED) TRUNNION 57.5 - VIVID C1+ (2024+)
ns	11.4118.102.058 REAR SHOCK EYELET ASSEMBLY - (EYELET, DAMPER BODY & O-RINGS) (RESERVOIR & CONTROLS NOT INCLUDED) TRUNNION 60 - VIVID C1+ (2024+)
ns	11.4118.102.059 REAR SHOCK EYELET ASSEMBLY - (EYELET, DAMPER BODY & O-RINGS) (RESERVOIR & CONTROLS NOT INCLUDED) TRUNNION 62.5 - VIVID C1+ (2024+)
ns	11.4118.102.060 REAR SHOCK EYELET ASSEMBLY - (EYELET, DAMPER BODY & O-RINGS) (RESERVOIR & CONTROLS NOT INCLUDED) TRUNNION 65 - VIVID C1+ (2024+)
ns	11.4118.102.061 REAR SHOCK EYELET ASSEMBLY - (EYELET, DAMPER BODY & O-RINGS) (RESERVOIR & CONTROLS NOT INCLUDED) TRUNNION 67.5 - VIVID C1+ (2024+)
ns	11.4118.102.062 REAR SHOCK EYELET ASSEMBLY - (EYELET, DAMPER BODY & O-RINGS) (RESERVOIR & CONTROLS NOT INCLUDED) TRUNNION 70 - VIVID C1+ (2024+)
ns	11.4118.102.063 REAR SHOCK EYELET ASSEMBLY - (EYELET, DAMPER BODY & O-RINGS) (RESERVOIR & CONTROLS NOT INCLUDED) TRUNNION 72.5 - VIVID C1+ (2024+)
ns	11.4118.102.064 REAR SHOCK EYELET ASSEMBLY - (EYELET, DAMPER BODY & O-RINGS) (RESERVOIR & CONTROLS NOT INCLUDED) TRUNNION 75 - VIVID C1+ (2024+)
KNOB KITS	
9	11.4118.097.001 REAR SHOCK COMPRESSION KNOB KIT - (INCLUDES LOW SPEED COMPRESSION KNOB, SCREW) -VIVID C1+ (2024+)
10	11.4118.097.002 REAR SHOCK LOCKOUT KNOB KIT - (INCLUDES LOCK KNOB, SET SCREW) - SUPER DELUXE ULTIMATE C1+(2023+)/SUPER DELUXE COIL B1 (2023-2024)/VIVID ULTIMATE AIR/COIL C1+ (2024+)
11	11.4118.097.003 REAR SHOCK REBOUND KNOB KIT - (INCLUDES REBOUND KNOB, SLEEVE) - VIVID C1+ (2024+)
DAMPER SHAFTS	
12	11.4118.115.000 REAR SHOCK DAMPER SHAFT ASSEMBLY - (INCLUDES SHAFT, NEEDLE, EYELET, BUMPER, REDUCER) STANDARD SHAFT EYELET 37.5-45MM - VIVID C1+ (2024+)
12	11.4118.115.001 REAR SHOCK DAMPER SHAFT ASSEMBLY - (INCLUDES SHAFT, NEEDLE, EYELET, BUMPER, REDUCER) STANDARD SHAFT EYELET 47.5-55MM - VIVID C1+ (2024+)
12	11.4118.115.002 REAR SHOCK DAMPER SHAFT ASSEMBLY - (INCLUDES SHAFT, NEEDLE, EYELET, BUMPER, REDUCER) STANDARD SHAFT EYELET 57.5-65MM - VIVID C1+ (2024+)
12	11.4118.115.003 REAR SHOCK DAMPER SHAFT ASSEMBLY - (INCLUDES SHAFT, NEEDLE, EYELET, BUMPER, REDUCER) STANDARD SHAFT EYELET 67.5-75MM - VIVID C1+ (2024+)
RESERVOIR	
13	11.4118.088.008 REAR SHOCK RESERVOIR ASSEMBLY- RCT SELECT+ (INCLUDES RESERVOIR, INTERNALS, CONTROLS) - VIVID AIR/COIL C1+, SUPER DELUXE AIR C1+/COIL B1
14	11.4118.088.009 REAR SHOCK RESERVOIR ASSEMBLY - RC2 ULTIMATE DH (INCLUDES RESERVOIR, INTERNALS, CONTROLS) - VIVID AIR/COIL C1+, SUPER DELUXE AIR C1+/COIL B1
U1	00.4318.084.000 RESERVOIR UPGRADE KIT - RC2T ULTIMATE RESERVOIR (INCLUDES COMPLETE ULTIMATE RESERVOIR, INTERNALS, CONTROLS) - VIVID AIR/COIL C1+, SUPER DELUXE AIR C1+/COIL B1
FA1	11.4118.088.011 REAR SHOCK RESERVOIR ASSEMBLY - (INCLUDES RESERVOIR, INTERNALS, CAP SCREWS, AND NECK- MODULE SOLD SEPARATELY) -VIVID C1/VIVID COIL C1 FLIGHT ATTENDANT 37-65 (2025+)
FA1	11.4118.088.012 REAR SHOCK RESERVOIR ASSEMBLY - (INCLUDES RESERVOIR, INTERNALS, CAP SCREWS, AND NECK- MODULE SOLD SEPARATELY) -VIVID C1/VIVID COIL C1 FLIGHT ATTENDANT 67.5-75 (2025+)
FA2	11.4118.087.003 REAR SHOCK MOTOR MODULE (INCLUDES COMPLETE ELECTRONICS ASSEMBLY AND CAP SCREWS) - VIVID ULTIMATE FLIGHT ATTENDANT C2 (2025+)
T	11.4118.057.016 REAR SHOCK RESERVOIR TUBE - 62MM -SUPER DELUXE AIR/THRUSHAFT C1/COIL R/RC3/RCR, VIVID AIR/COIL C1+ (37.5-65)
T	11.4118.057.017 REAR SHOCK RESERVOIR TUBE - 68MM -SUPER DELUXE AIR/THRUSHAFT C1/COIL R/RC3/RCR(67.5-75), RCT/RC(37.5-65), VIVID AIR/COIL C1+ (67.5-75)
TRAVEL CHANGE (see note)	
18	11.4118.113.017 REAR SHOCK TRAVEL CHANGE KIT (INCLUDES TRAVEL REDUCERS, BOTTOM POST, AND BOTTOM OUT BUMPER) - VIVID C1+ (2024+), VIVID COIL C1+ (2025+)
TOOLS	
15	00.4118.422.000 Rear Shock Toolset for Vivid Service (includes countermeasure tools, clip, 46/36 crowfoot, body protector) - Vivid C1+ (2024+)
16	00.4318.089.000 Rear Shock Bearing Adapter Socket Tool 26mm- (used for installing and removing bearing adapter kit, 8x30) - Vivid C1 (2024+), Super Deluxe Coil B1+ (2023+)
17	00.4318.080.000 Rear Shock Crowfoot Wrench - 36mm, 46mm (used for Air Can Service) - Vivid C1+ (2024+)
ns	00.4318.012.013 ROCKSHOX GLASS FIBER REINFORCED NYLON NON-SCRATCH O-RING PICK TOOLS (QTY 5, FOR USE ON SUSPENSION PRODUCTS)
ns	00.4315.022.010 REAR SHOCK SCHRADER VALVE REMOVAL TOOL ROCKSHOX
ns	00.4318.041.001 REAR SHOCK IFP PULLER (FOR REMOVING IFP) - SUPERDELUXE/SUPERDELUXE COIL/THRU SHAFT/VIVID
ns	00.4318.041.002 REAR SHOCK IFP HEIGHT TOOL (FOR SETTING IFP HEIGHT) - SUPERDELUXE/SUPER DELUXE COIL A1+ (2018+),VIVID C1+ (2024+)
LUBE	
ns	11.4318.016.000 MAXIMA PLUSH DYNAMIC SUSPENSION LUBE LIGHT, 120ML BOTTLE (REPLACES 0W-30) - PIKE/REVELATION/LYRIK/YARI/BOXXER/ZEB/DOMAIN/REVERB XPLR/SHOCK AIR CANS
ns	11.4318.016.001 MAXIMA PLUSH DYNAMIC SUSPENSION LUBE LIGHT, 1 LITER BOTTLE (REPLACES 0W-30) - PIKE/REVELATION/LYRIK/YARI/BOXXER/ZEB/DOMAIN/REVERB XPLR/SHOCK AIR CANS
ns	11.4115.094.040 MAXIMA SUSPENSION OIL PLUSH, 7WT 1 LITER BOTTLE - REAR SHOCK DAMPER
ns	00.4318.008.002 GREASE ROCKSHOX DYNAMIC SEAL GREASE (PTFE) 1OZ - RECOMMENDED FOR SERVICING REAR SHOCKS & FORKS
ns	00.4318.008.004 GREASE ROCKSHOX DYNAMIC SEAL GREASE 500ML - RECOMMENDED FOR SERVICING REAR SHOCKS & FORKS
PUMPS	
ns	00.4315.023.030 HIGH-PRESSURE FORK/SHOCK PUMP (600 PSI MAX) ROCKSHOX